

## Hourglass K1523

**Knoll**Textiles

**KT Collection** affordable modern design

### Primary Use

Upholstery  
Wrapped wall panels

### Content

Recycled polyester 77%  
Polyester 15%  
Nylon 8%

### Width

56 inches

### High Performance

100,000+ double rubs

### Environmental

77% post-consumer  
recycled content  
Clean Air GOLD

**made in  
theUSA**



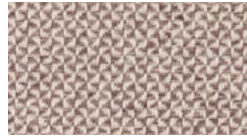
K1523/1 Air



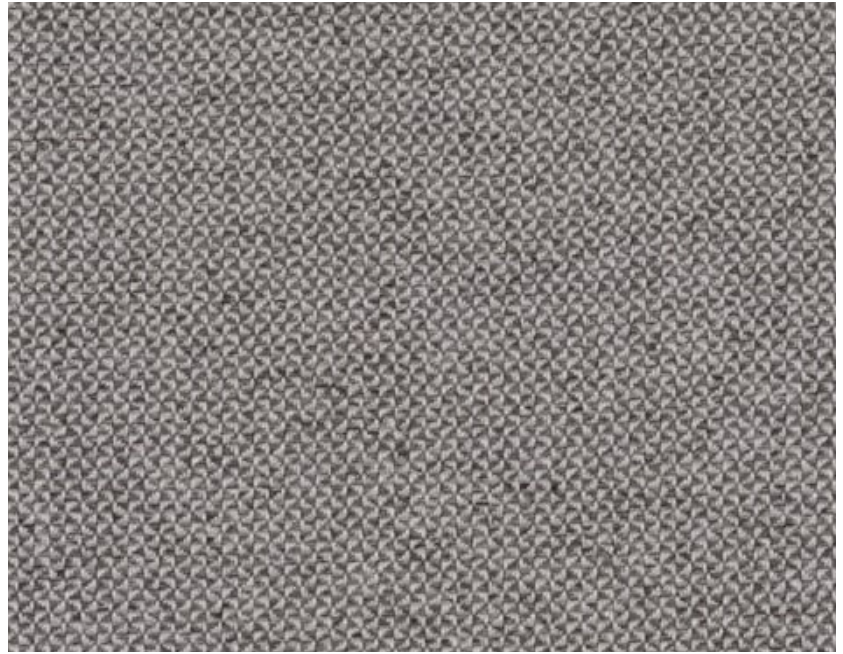
K1523/2 Gull



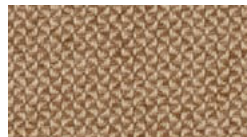
K1523/3 Sandbar



K1523/4 Cork



K1523/24 Misty



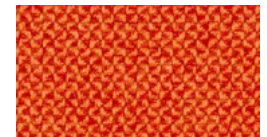
K1523/5 Flax



K1523/6 Beeswax



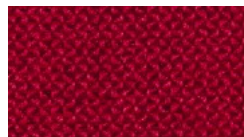
K1523/7 Tangerine



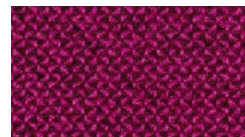
K1523/8 Sunshine



K1523/9 Sizzle



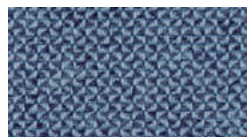
K1523/10 Flame



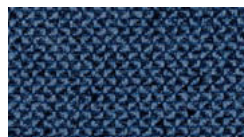
K1523/11 Tart



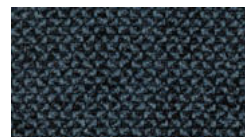
K1523/12 Jelly



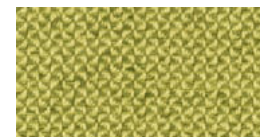
K1523/13 Bluebird



K1523/14 Liberty



K1523/15 Indigo



K1523/16 Spring



K1523/17 Olive



K1523/18 Aegean



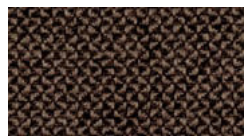
K1523/19 Latte



K1523/20 Almond



K1523/21 Bark



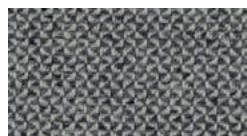
K1523/22 Mocha



K1523/23 Galaxy



K1523/24 Misty



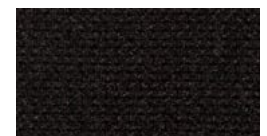
K1523/25 Iron



K1523/26 Wire



K1523/27 Alley



K1523/28 Caviar

<b>Name</b>	Hourglass <b>KT Collection</b>
<b>Style Number</b>	K1523
<b>Primary Use</b>	Upholstery Wrapped wall panels
<b>Content</b>	Recycled polyester 77% Polyester 15% Nylon 8%
<b>Finish</b>	Soil and stain repellent
<b>Weight</b>	14.5 oz. per linear yard
<b>Width</b>	56 inches
<b>Flame Resistance</b>	CAL 117-2013 ASTM E-84 (unadhered) Class A
<b>Lightfastness</b>	AATCC 16E, 40 hours, Class 4.5
<b>Abrasion</b>	100,000+ double rubs, Wyzenbeek method Multiple factors affect fabric durability and appearance retention, including end-user application and proper maintenance. Wyzenbeek results above 100,000 double rubs have not been shown to be a reliable indicator of increased fabric lifespan
<b>Maintenance</b>	W-S: Clean with water or solvent based cleaning agent
<b>Custom</b>	Some custom colors available with a minimum of 280 yards. Additional charges or lead times may be required.
<b>Environmental</b>	This fabric is certified Clean Air GOLD for low VOC emissions and may contribute to LEED®, WELL Building, and Living Building Challenge certification.

